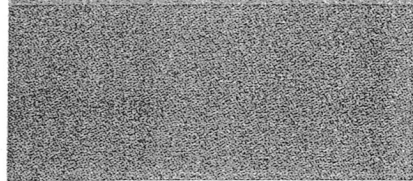




Posted by Keisha



I wouldn't like that, but at least their school year was shorter than ours.

Posted by Mrs. Andrews



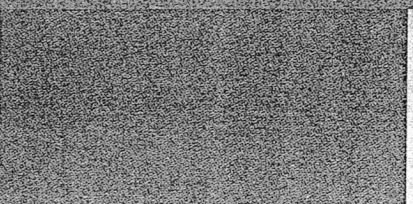
You're right, Keisha. School was usually open from November to April. Most children had to help on the farm during the fall harvest and spring planting.

Posted by Jamal



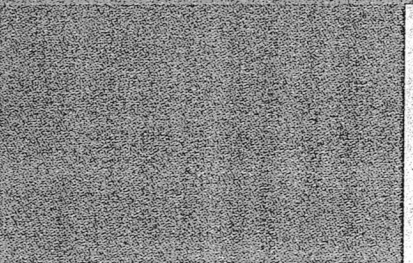
I think it'd be cool to have a wood stove in our classroom.

Posted by Lindsay



But not if you had to help the teacher chop and collect wood in the morning.

Posted by Travis



They had too many chores! I'm happy to stay where I am.

Reflect on

Writer's Craft: Why does staying on topic make writing strong?

Critical Literacy: Imagine if students from around the world joined this discussion. How might their postings be the same? How might they be different?